

Directions

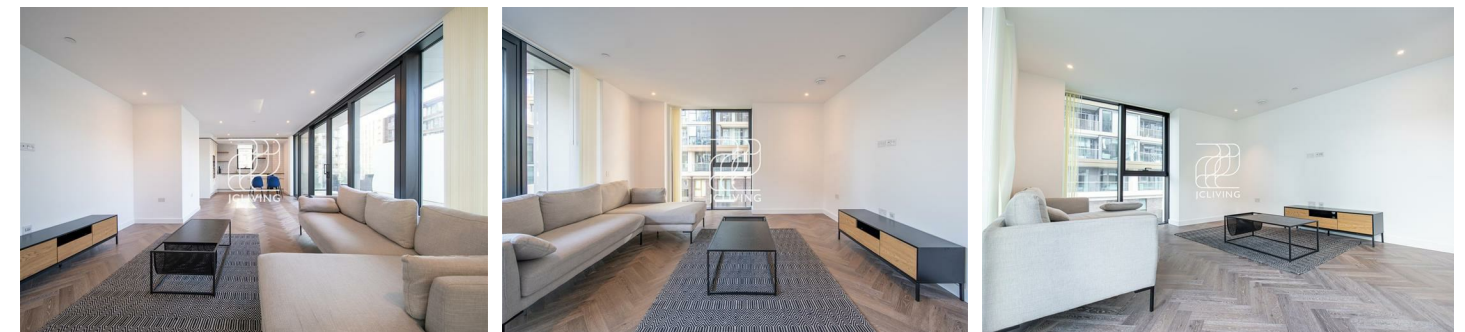
Viewings

Viewings by arrangement only. Call 02033696888 to make an appointment.

EPC Rating

B

Energy Efficiency Rating		Current	Potential
Very energy efficient - lower running costs			
(92 plus) A			
(81-91) B		85	85
(69-80) C			
(55-68) D			
(39-54) E			
(21-38) F			
(1-20) G			
Not energy efficient - higher running costs			
England & Wales		EU Directive 2002/91/EC	



CN412 Apartment 402, Cashmere Wharf 23 Gauging Square, London, E1W 2AW
£969 Per Week

Cashmere Wharf 23 Gauging Square, London E1W



***Please quote JC2306164 when contacting the office ***

JCLiving is proud to present this stunning two-bedroom, two-bathroom apartment at 23 Gauging Square, London E1W, offered furnished and available from 26th August.

Located in Cashmere Wharf at London Dock, designed by Patel Taylor, this contemporary home features floor-to-ceiling windows, a private balcony, a bespoke kitchen with integrated appliances and stone worktops, herringbone timber flooring, fitted wardrobes, and an en-suite bathroom.

Residents enjoy 24hr concierge, gym, swimming pool, sauna, steam room, private cinema, virtual golf, and squash court.

Tower Hill Underground Station (District & Circle lines) is a 10–12 minute walk, offering easy access to The City and Canary Wharf. Tower Bridge, St Katharine Docks, and Waitrose are nearby.



Council Tax Band:

